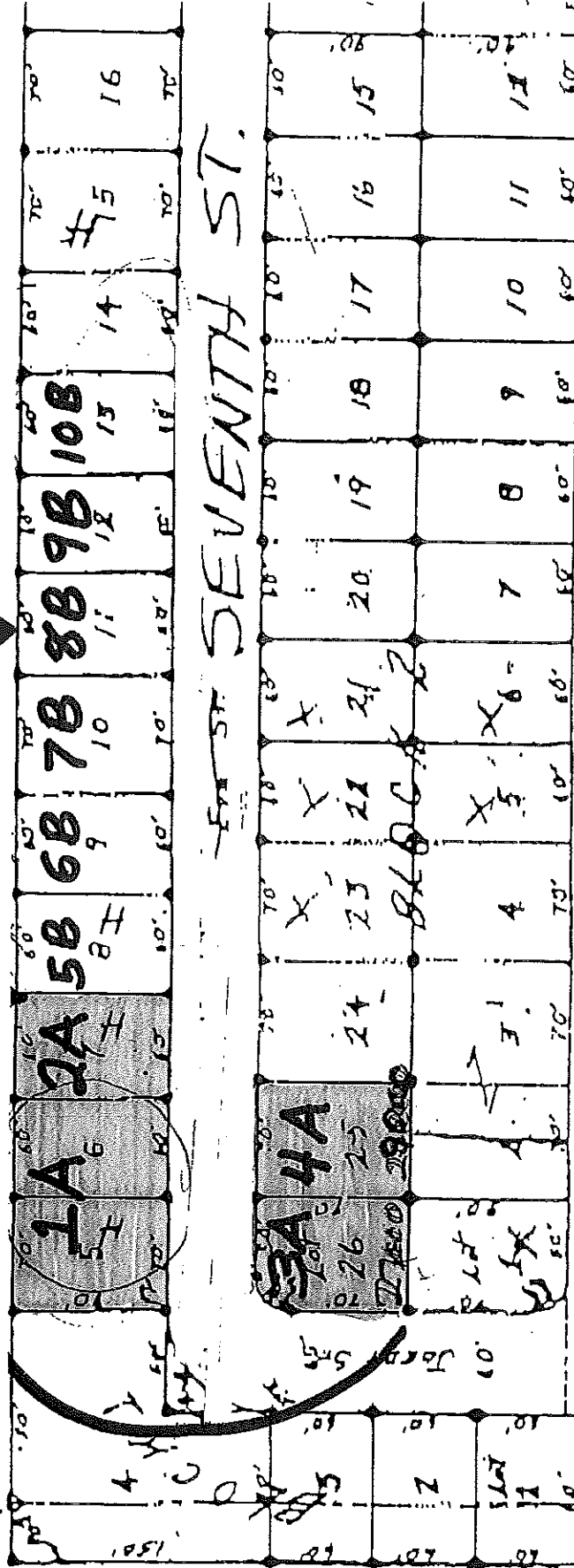


SECTION 4, TOWNSHIP 2, RANGE 10, MERIDIAN 1

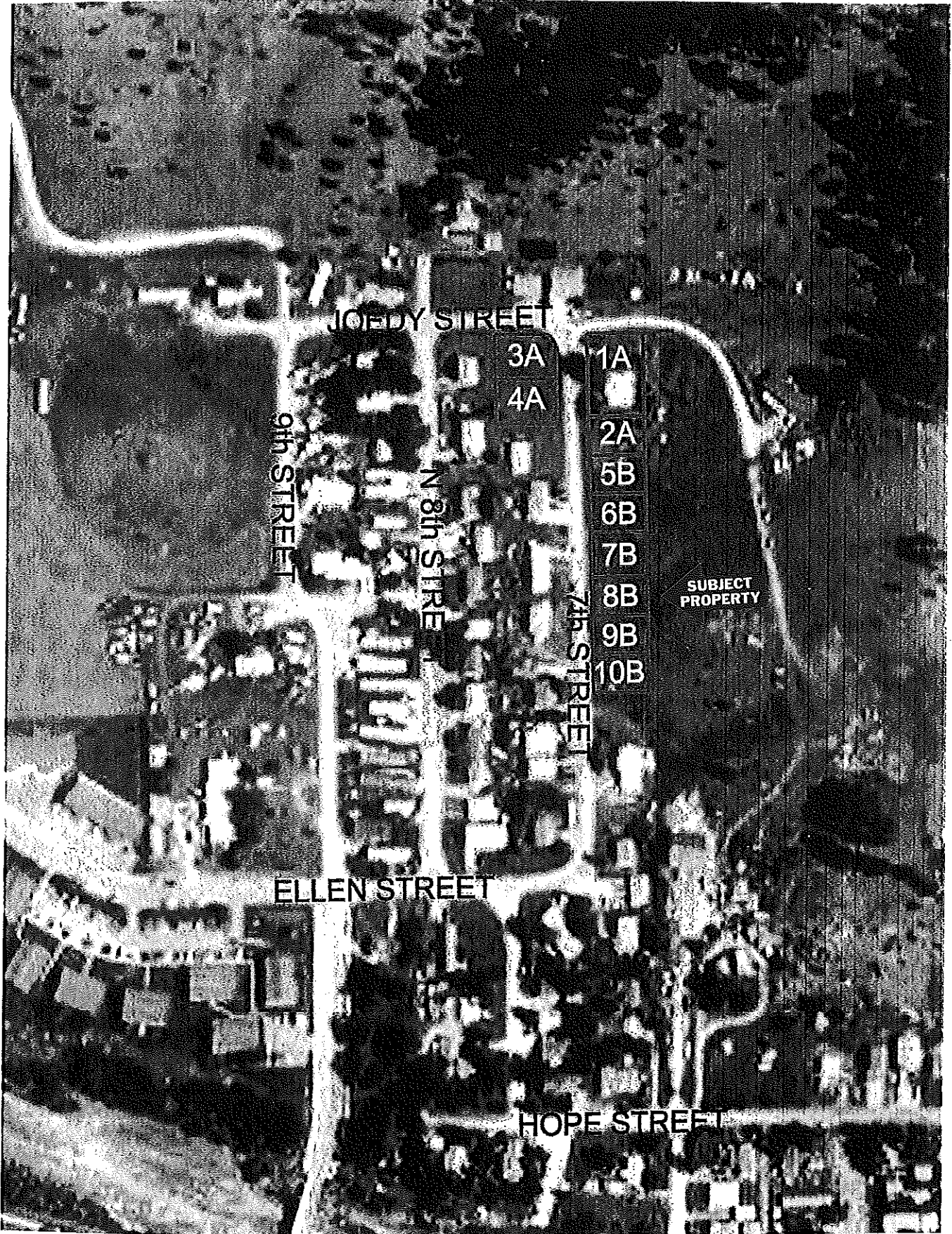
IN SECTION 4, T5N, R51E, S8M., MADISON COUNTY, SOUTH DAKOTA.

SUBJECT PROPERTY

1/4 CORNER
CENTER
OF SECTION 4



SECTION SEVENTEEN ST.



JOEY STREET

9th STREET

N 8th STREET

7th STREET

ELLEN STREET

HOPE STREET

3A
4A

1A
2A
5B
6B
7B
8B
9B
10B

SUBJECT PROPERTY