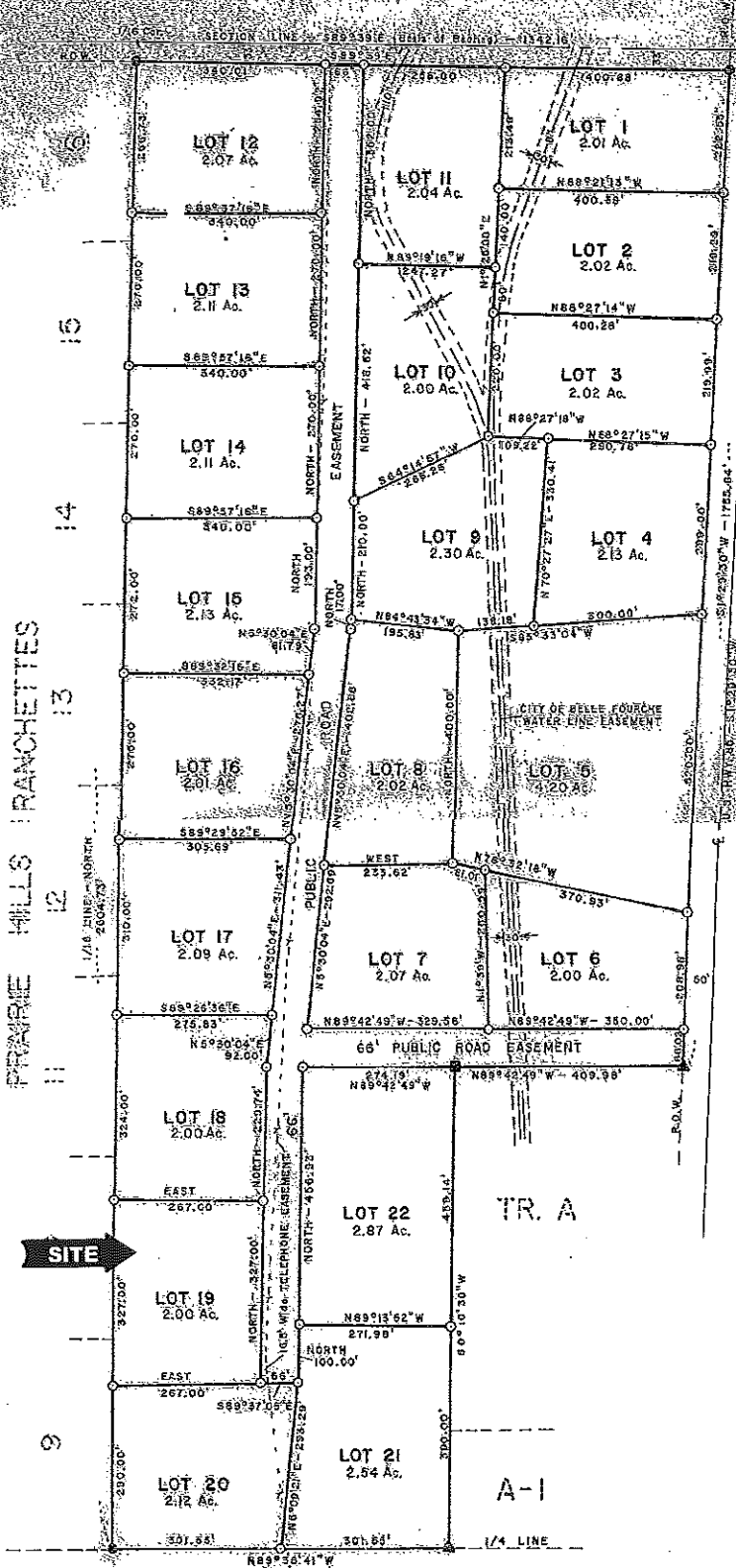


PLAT OF PRAIRIE HILLS RANCHETTES NO. 3, A Subdivision of the E 1/2 NW 1/4 SECTION 27, T8N, R2E, B.H.M., BUTTE COUNTY, SOUTH DAKOTA



- SET 5/8" rebar with plastic cap
- FOUND 5/8" rebar with plastic cap
- △ FOUND 1" steel pipe set by previous survey
- FOUND 1" iron pipe set by previous survey

- NOTES:
1. Water will be supplied to this subdivision by a central water system in the Prairie Hills Ranchettes.
 2. An easement over a strip of land 15' wide, along all side and rear lot lines is reserved for the installation and maintenance of utilities.



SCALE: 1" = 200'

ACCESS APPROVED: Bill Dohak
S.D. DIVISION OF HIGHWAYS
Shannon Schuster
BUTTE COUNTY HIGHWAY SUPERINTENDENT

SURVEYOR'S CERTIFICATE
I, Earl T. McArthur, Jr., a Registered Land Surveyor in the State of South Dakota, do hereby certify that at the request of the owners, have surveyed the land shown in the above plat, and upon the ground the boundaries thereof, said land shall hereinafter be known by the designation shown above, in witness whereof, my hand and seal this 24th day of February, 1984.

Earl T. McArthur, Jr.
Registered Land Surveyor # 2165

ACKNOWLEDGEMENT OF SURVEYOR
STATE OF SOUTH DAKOTA
COUNTY OF BUTTE
On this day, before me, a Notary Public within the State and aforesaid, personally appeared Earl T. McArthur, Jr., known to me the person who executed the foregoing Surveyor's Certificate, acknowledged that he executed the same, in witness whereof, I my hand and seal this 24th day of February, 1984.

William
Notary Public; My Commission expires: 9/26/85

CERTIFICATE OF COUNTY DIRECTOR OF EQUALIZATION
I, the undersigned, do hereby certify that I have received a copy of the above shown plat this 27 day of February, 1984.

Stanley Storms
Director of Equalization, Butte County

CERTIFICATE OF COUNTY TREASURER
I, the undersigned, do hereby certify that all the taxes which upon the land shown in the above plat, as shown by the record office, have been paid in full.

Manda Kudziel, by Helen Mohr, Secy
Treasurer, Butte County

RECOMMENDATION OF COUNTY PLANNING COMMISSION
Recommend for approval to the Butte County Commissioners this 28 day of Feb., 1984.

Jim M. Esch
Chairman, Butte County Planning Commission

CERTIFICATE OF OWNERS:

We, Northwest South Dakota Production Credit Association and R.A. Mader, do hereby certify that we are the sole owners of the land shown in above plat that we did authorize and do join in and approve the above survey and plat. We further certify that development of this land will conform to all existing applicable zoning, subdivision, and erosion and sediment control regulations. We further dedicate the strip of land designated on the plat as PUBLIC ROAD EASEMENT to the use of the public forever, in witness whereof, we have set our hands this 28 day of February, 1984.

Floyd Wennberg
Floyd Wennberg, Vice-President,
Northwest South Dakota Production Credit Association

R.A. Mader
R.A. Mader